



D48 Quick Start Guide



V1 2023-07

1. Product Introduction



CELTO D48 is a 4 IN 8 OUT digital loudspeaker management system using top-of-the-line SHARC ADSP-21489 400MHz floating point DSP.

It features 16 programmable filters per input and per output, gain control, matrix routing, feedback suppressors, noise gates, TrueRMS voltage limiters, built-in signal generators, up to 48dB/oct crossovers, and long delays to handle the most demanding projects.

- Easy to use front panel interface
- 114dBu dynamic range converters
- 100M Ethernet interface
- PC software with Network auto discovery
- Advanced password management
- Fast copy of channel parameters
- Firmware update by user
- 32 user memories

2. Technical parameters

Parameters	D48
Maximum input level	20dBu
Maximum output level	20dBu
Default output level	0dBu
Harmonic distortion THD+N	<0.005% @ +4dBu 20Hz ~ 20kHz
Frequency response	20Hz-20 KHZ ± 0.3 dB
Noise floor	-92dBu
Input-output dynamic range	110dB
Signal-to-noise ratio	-110dB
DSP	400Mhz ADSP-21489
Sampling frequency	96K
Quantization	24Bit
Mode storage	32
Control mode	100M Ethernet
Control software language	English
Noise gate	Yes
Feedback suppressor	Yes
Signal generator	Yes
limiter	Yes
Delay	Output 1~4 : 218ms Output 5~8 : 148ms
PEQ Low Shelf High Shelf	16 sections
High pass/low pass Bessel Butterworth Link-Riley	6dB/oct 12dB/oct 18dB/oct 24dB/oct 36dB/oct 48dB/oct
Optional features	All-pass Filter
AES input	AES IN-A (1-2) AES IN-B (3-4)

3. Software operation

CELTO D48 Control software runs on Windows 7 / 10 / 11 (32 and 64 bit versions)

The software uses 50Mb of storage and 2Mb of RAM

Network environment: 100M LAN or wireless router

The software is available in 2 versions:

- Executable setup that will install all the files in a dedicated folder and set a shortcut in your desktop (recommended)
- ZIP archive that you must decompress on any folder of your computer. Simply launch “CELTO D48 Control.exe” to run the software (see *Illustration1* below).

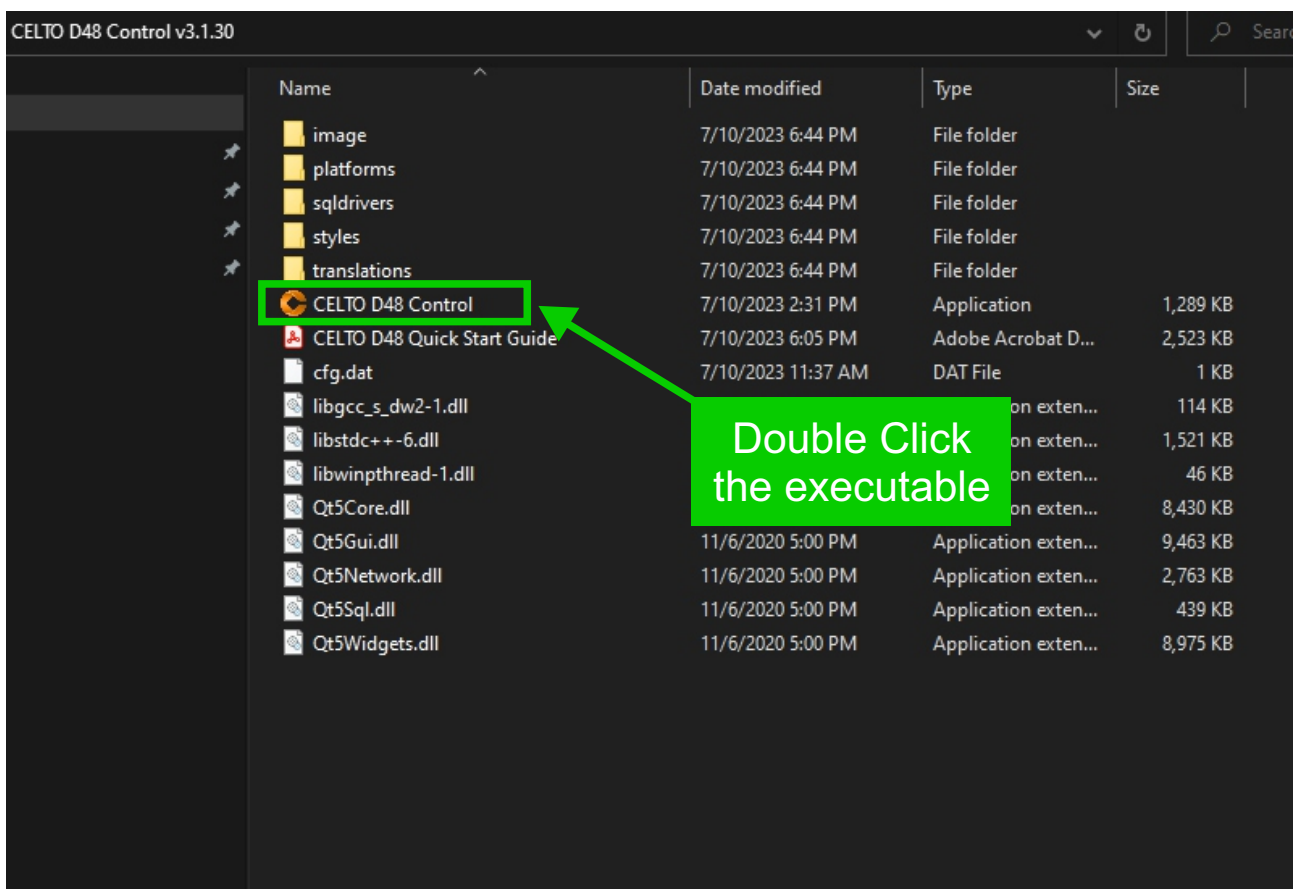


Illustration1: Folder structure after after UnZipping the archive

Once the software is running, Power ON the D48 unit and connect it to the network using the provided cable (or any standard RJ45 network cable)

The unit must be on the same Subnet mask than the computer running the software (same switch/router). Once the unit is connected to the network, the software automatically detects it and the unit appears in the device list.

TIP: During the first usage, you must allow the D48 Control software in the Windows Firewall for proper function.

Once one or multiple units are detected by the software, they appear on the left column.

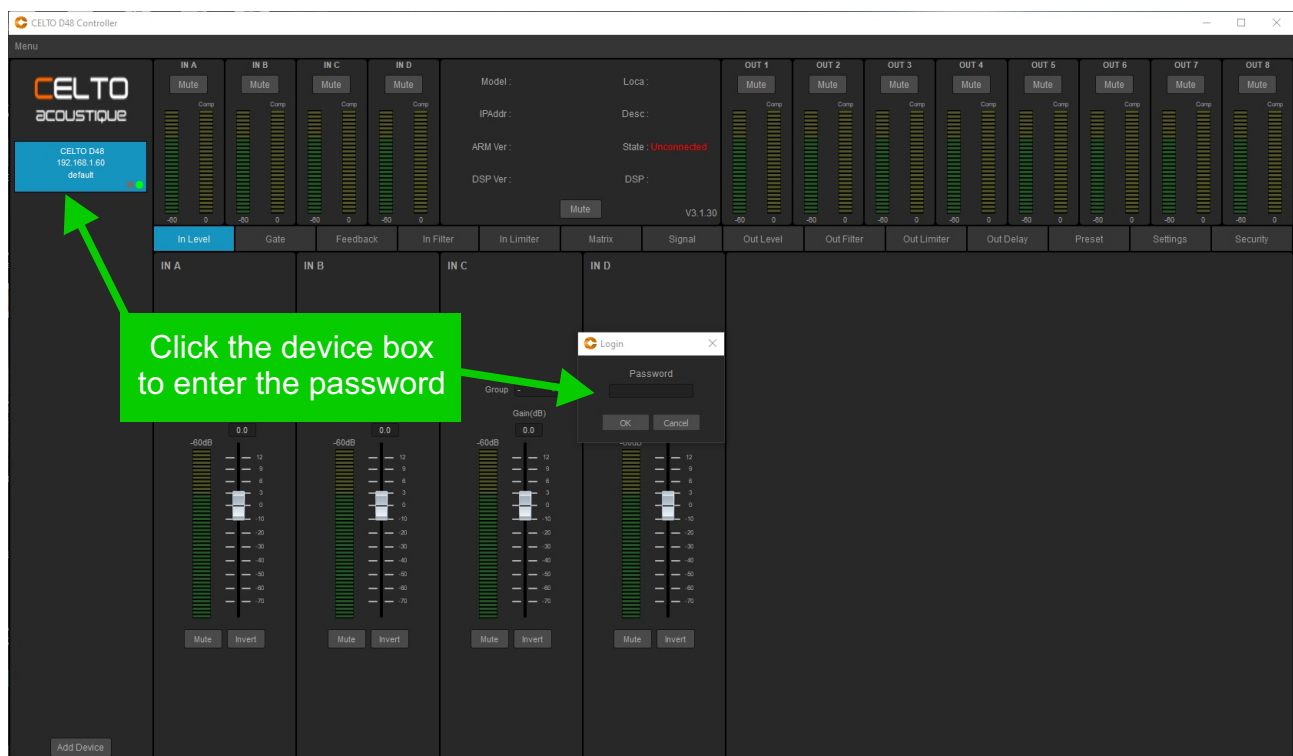


Illustration2: D48 Control main window after clicking the device box

Out of factory and after Reset, CELTO D48 comes with the following default values:

- Login password: admin
- Security password: ad123
-

The Login password is the password needed by the Control Software to connect to the unit.
The Security password is the password that protects user data.

TIP: Click [Menu] then [Device List] to see the connected units (see *Illustration3* below)

Device list											
	IP Address	Device Model	ARM Ver	DSP Ver	Location	Description	Device SN	Link Status	Runing Time	Total Time	Device ID
1	192.168.1.60	D48	V3.1.34	V1.5.11	test	test	CN-0000-89E-1412	Connected	0day 00:02:02	0day 08:02:02	20258164551
											Delete

Illustration3: Device List Window

After entering the Login password, user can access all the pages. By default, the software displays the **Input Level** page.

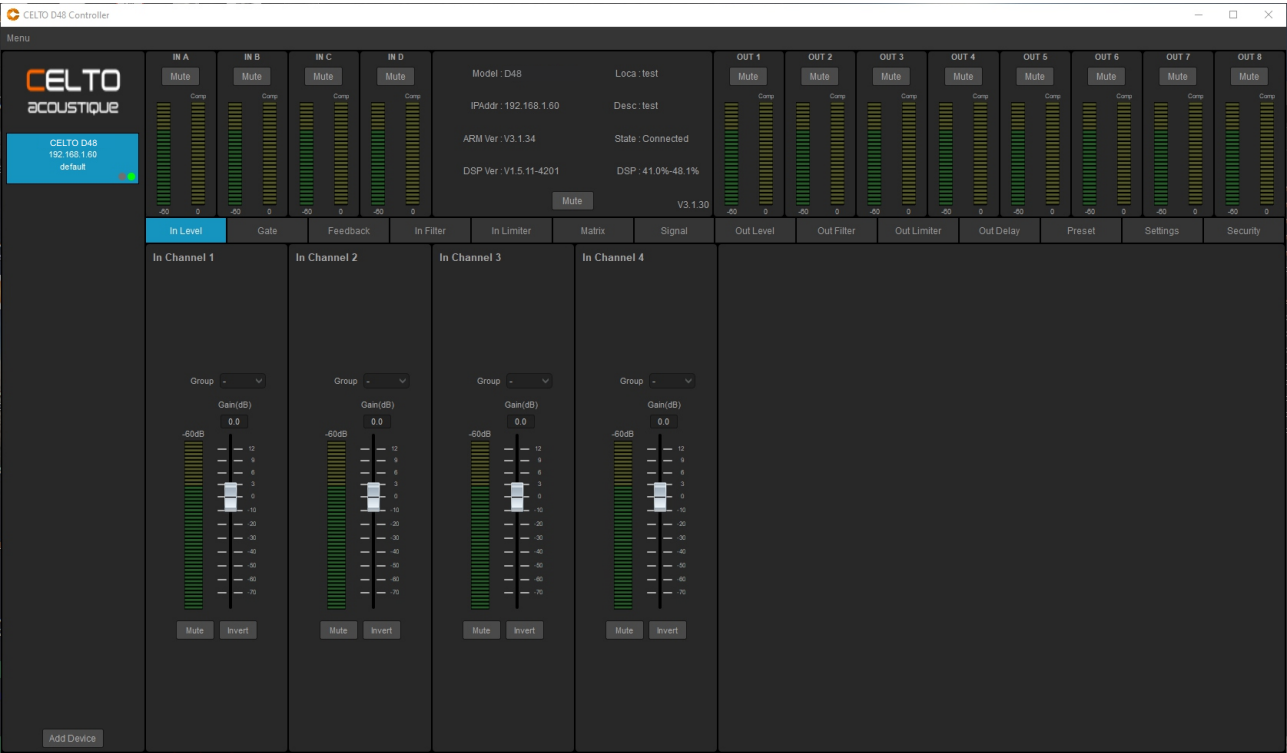


Illustration4: Main window after entering the Login password

The navigation bar is under the bargraph meters. Click the navigation bar to access the indicated page. Everything is self explanatory and easy to understand.

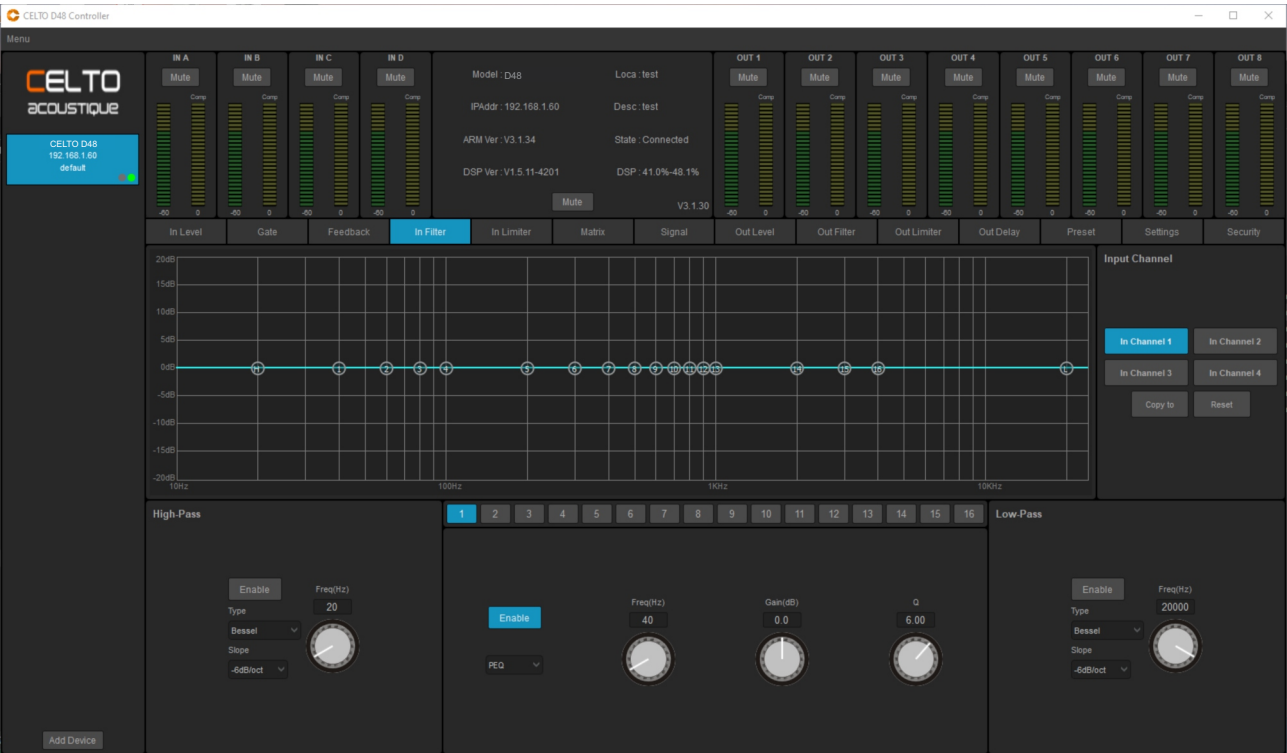


Illustration5: Input filter page

The **Settings** page allows the user to label the channels, lock the front panel and see the network parameters

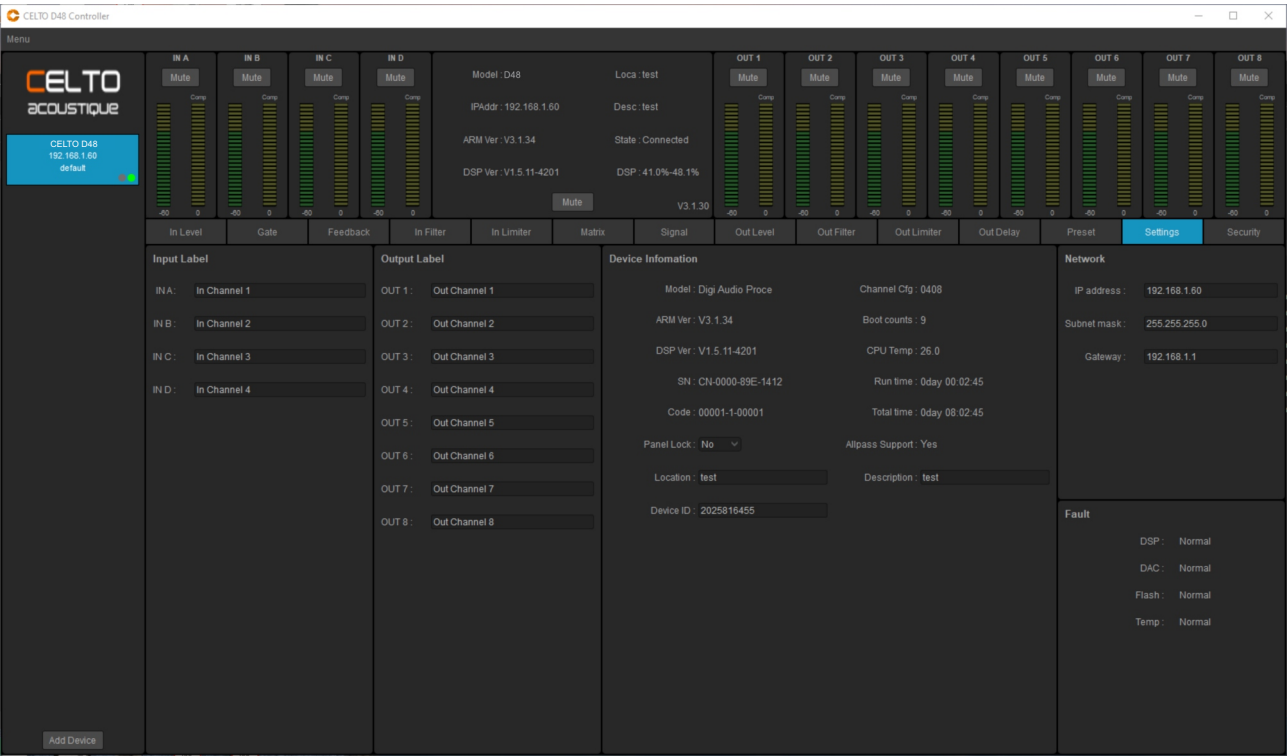


Illustration6: Settings page

The **Security** page allows the user to restrict access of every function individually. You can also change here the unit Security Password.

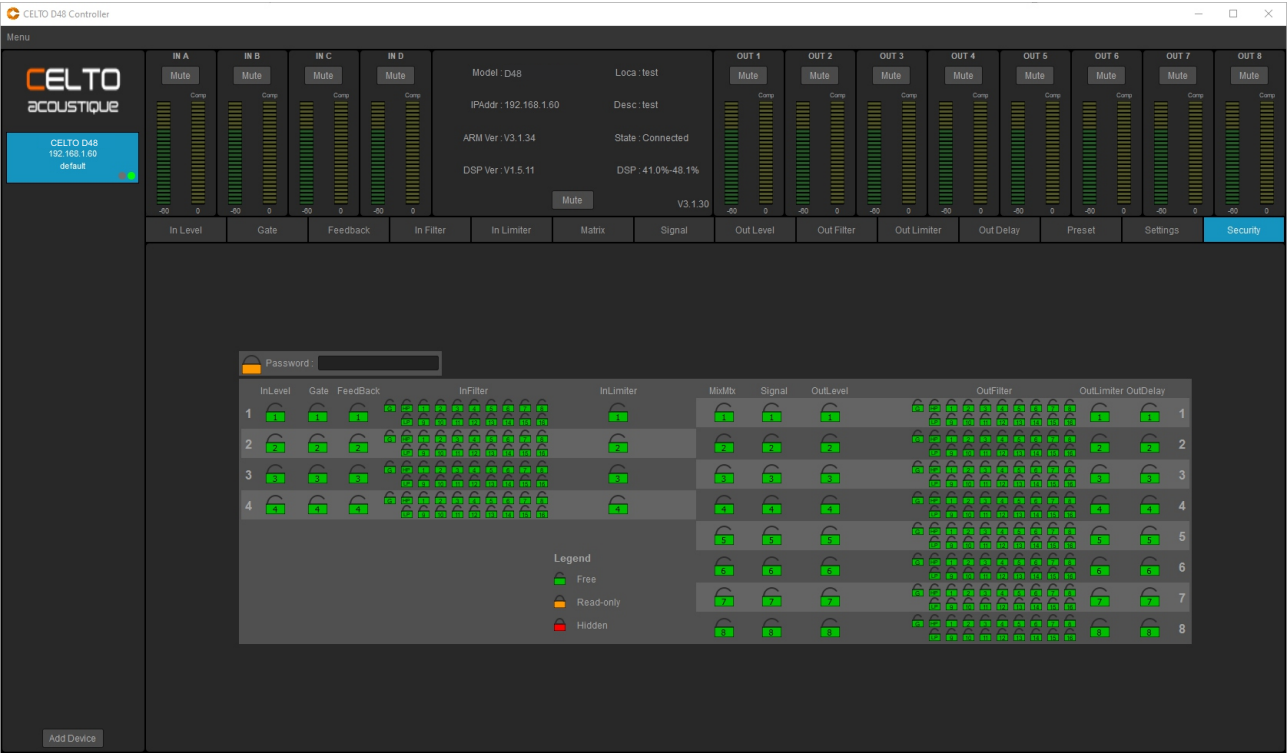


Illustration7: Security page



For more information and technical support,
contact us at support@celtogroup.com

Software updates available at celtopro.com